

CITY OF ANN ARBOR MRF INSPECTIONS

Findings From June 11, 2016

(Steven Schantz, Jose (Shift Supervisor))

The following findings were identified during a safety inspection at the MRF on June 11, 2016.

Material located / jammed in conveyer roller



Excessive trash located outside



Improperly secured confined space with lock cut-off



Fire extinguisher and fire exit blocked with material. Exit sign damaged



Confined space unsecure and blocked



Blocked E-stop at baler.



Excessive trash, improperly stored material, and egress concerns



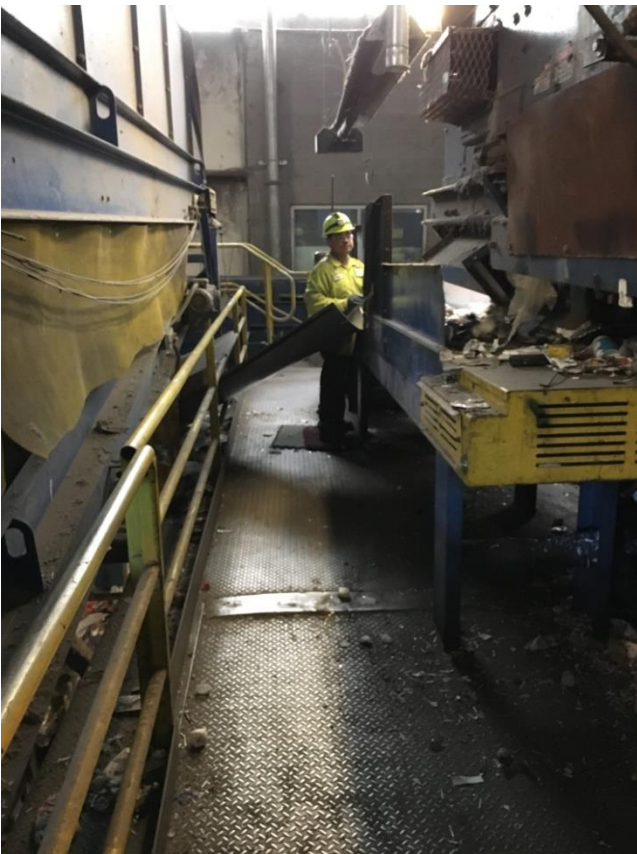
Unsecured blockade / railing



Excessive material and trash.



Blocked egress or no sign indicating not an egress area.



Unsecured authorized area.



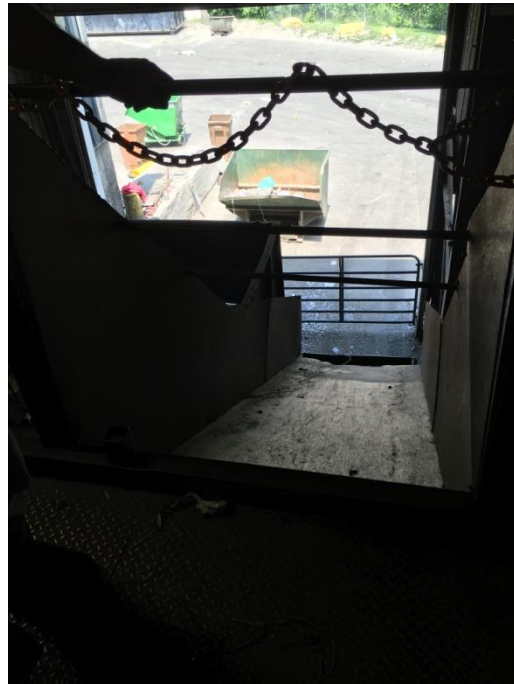
Excessive trash / material located on floor creating slip, trip and fall hazards.



Damaged equipment causing material spillage resulting in slip, trip, and fall hazards.



Fall Hazards / missing railing or chains.



Blocked fire egress.



ISSUES CORRECTED FROM PREVIOUS INSPECTIONS

Corrected machine guarding issues.



Broken motor bracket corrected

