

CITY OF ANN ARBOR MRF INSPECTIONS

Findings From June 20, 2016

(Steven Schantz, No ReCommunity Employee Present at Time of Inspection)

The following findings were identified during a safety inspection at the MRF on June 20, 2016.

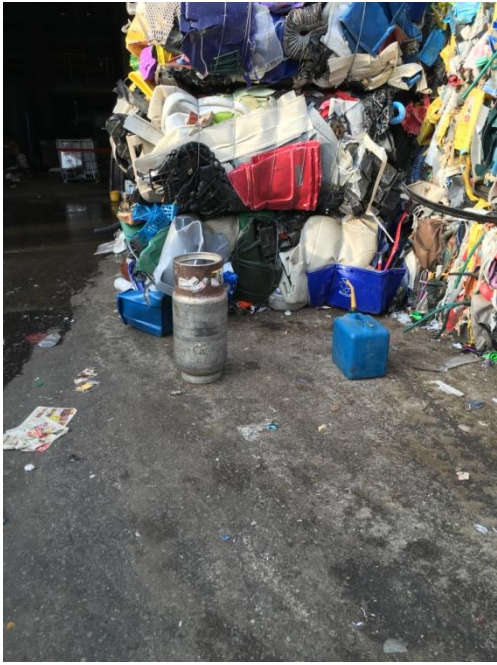
Improperly secured confined space. Work was being conducted within the space w/ no confined space protocols or proper securing of the space. No attendant, no signage, and no observation of confined space permit were present. Proper lockout / tagout was observed by contract employees. If ReCommunity feels this space needs to be re-classified, then documentation will be required and the rationale for re-classification will also need to be provided..



Emergency exit blocked with material



Improperly labeled and stored chemical container and gas cylinder. Improper gas can.



Improperly stored and labeled chemicals



Improperly stored and labeled chemicals



Blocked emergency exit and fire extinguisher



Excessive materials blocking exit door and increasing fire risk



Damaged stanchion / support post creating possible weakness or structural stress on stairs / landing



*It was noted that not all of Re-Community's heavy equipment, i.e. loaders, excavators, etc. had backup alarms creating risk to employees and visitors.