



Materials Recovery Facility  
Safety Observation Form

Date: Tuesday, June 21, 2016

Name of Observer: Shawn Qualls

Issues: See below.

Photos:



Damaged electrical equipment:

Top left:

- Switch: blade bent
- Improper labeling
- Cover not secured against unauthorized entry
- Out of service? If so, no tag.

Top right: missing button covers

Bottom:

- Heavily damaged
- Switch: blade bent
- Cover not secured against unauthorized entry
- Not secured – steel cross-beam damaged



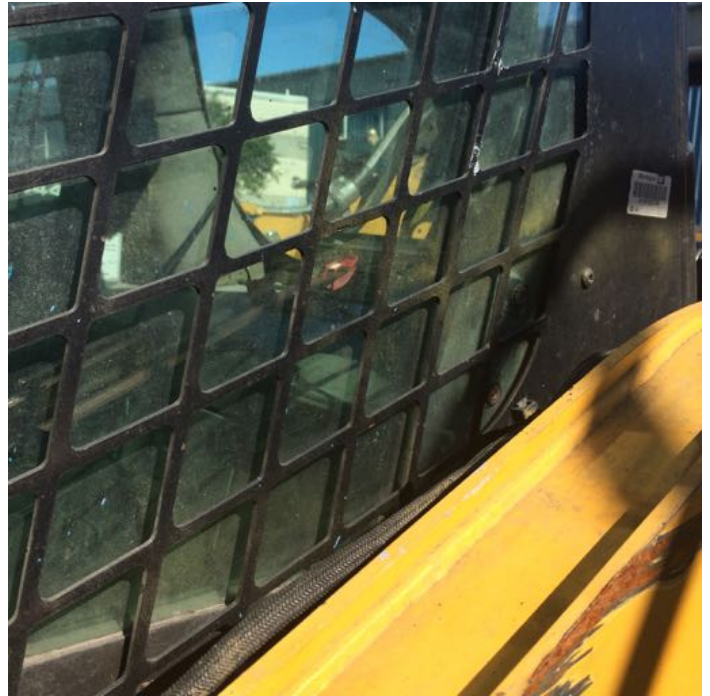


Top: Structural damage – struck by equipment

Bottom:

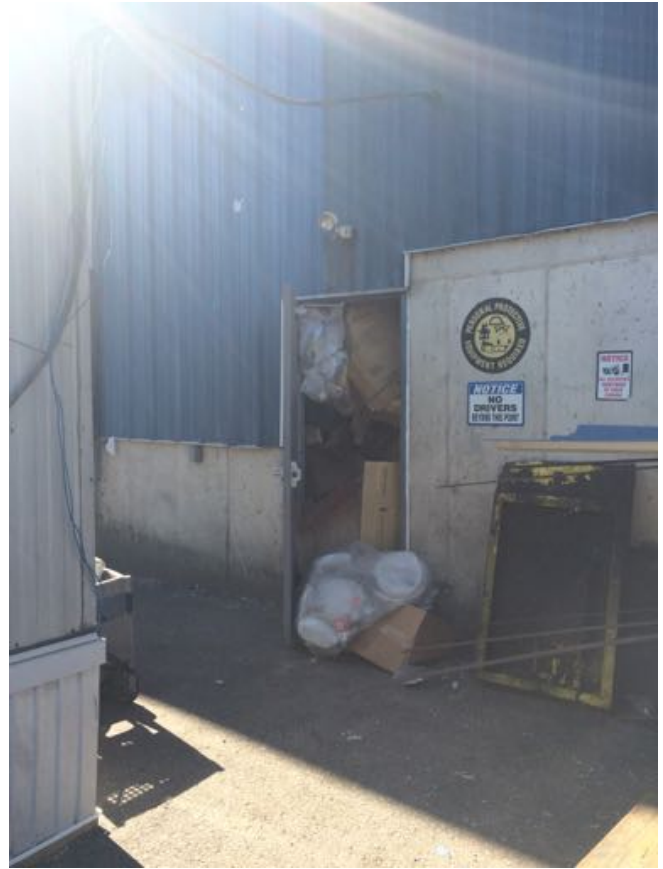
- Switch: blade switch missing
- Improper labeling
- Holes in exterior of enclosure
- Cover not secured against unauthorized entry
- Exterior sheet metal missing from building – switch exposed to elements





Top: two pieces of equipment with missing fire extinguishers

Bottom: exterior door panel secured with bungee cord



Top left:

- Door blocked
- Exit sign not secured

Top right:

- Door blocked
- Materials (metal) improperly stored; sticking out creating cut/puncture hazard

Bottom: Improper materials storage.



Top left: CG cylinders too close to ongoing cutting operations; within range of flying sparks.

Top right: CG Cylinder stored without cap

Bottom: damaged guardrail





All: Fire extinguishers missing or inaccessible

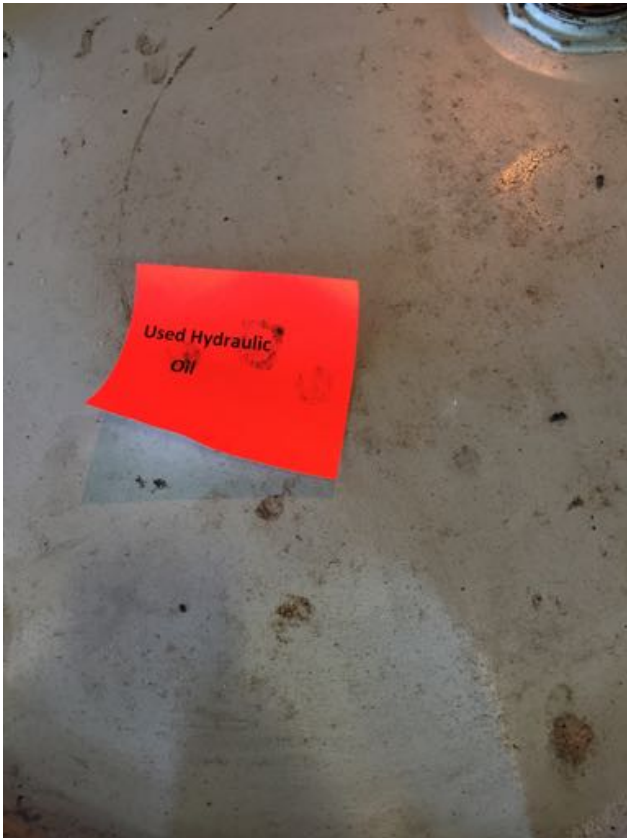


Left:

- Exposed wiring
- Dust build-up near exposed wiring;  
fire hazard

Right: Exposed wiring





Top left: pile is too high and potentially unstable. "walkway" not suitable for people to walk through (crush hazard). Area should be barricaded.

Top right:

- Electrical cabinet inside (former?) confined space.
- Dust/debris atop/underneath cabinet.
- Make sure working clearance can be maintained.
- Access control – make sure cabinets are locked or inaccessible to unqualified persons.

Bottom: Labeling





Top left: No guard

Top right: Cover not secured, screws missing

Bottom: Eye bolts that hold emergency stop-line to the conveyor at multiple points came out.