



Materials Recovery Facility  
Safety Observation Form

Date: Wednesday, June 22, 2016

Name of Observer: Shawn Qualls

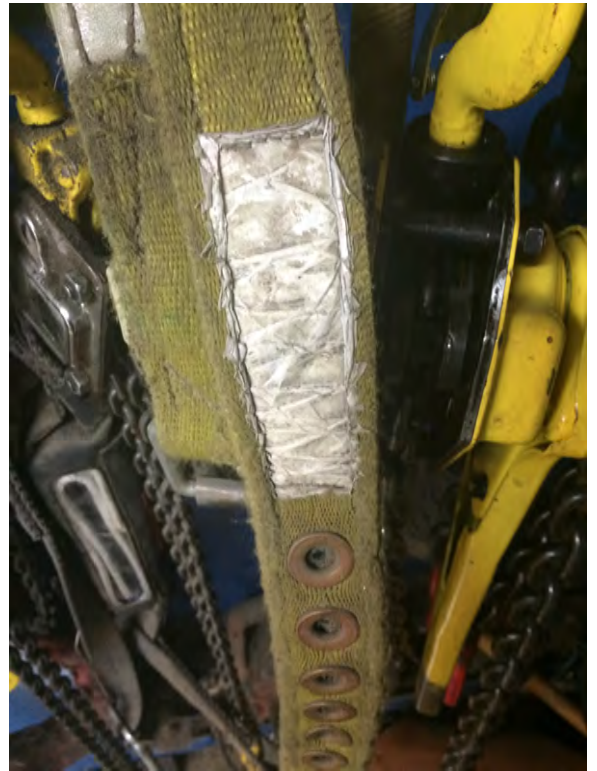
Issues: See below.

Photos:



Left:

- Spotter standing in pinch-point between forklift/load and wall [1910.178(m)(1)]
- Load not secured

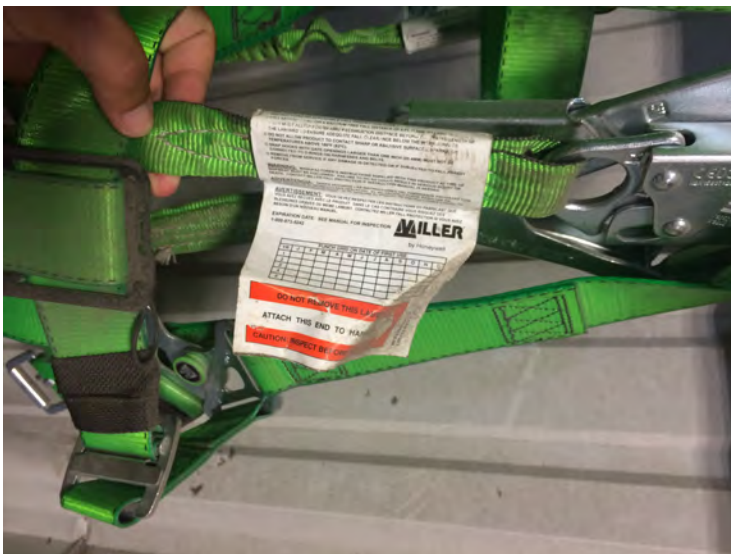


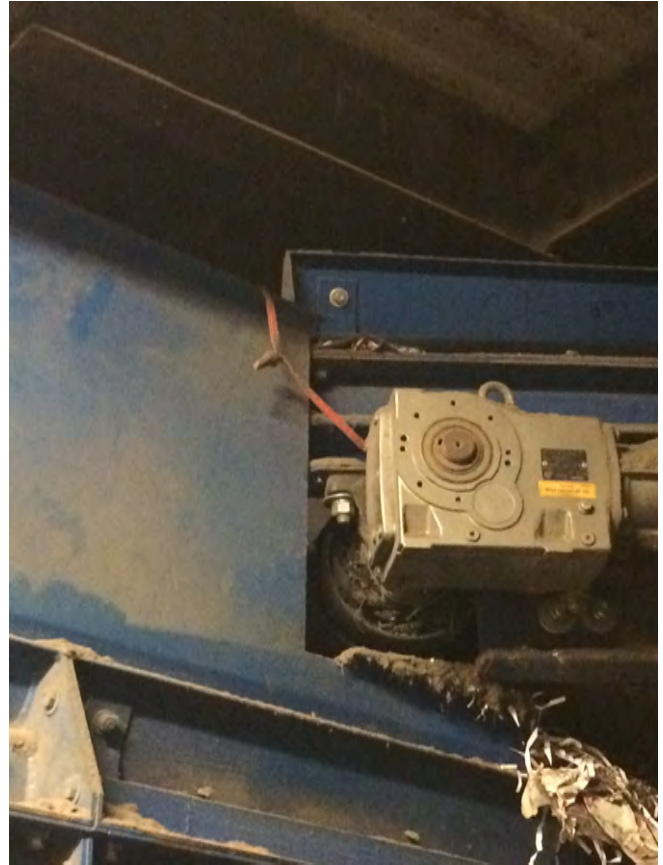
Above:

- Illegible tags
- Metal components rusted
- Cuts/abrasions
- Remove from service

Left top/middle/bottom

- Tags show equipment inspections never performed





Top left:

- Refuse container blocking walkway/emergency exit route
- Beams less than 6' 8" from floor along exit route [1910.36(g)(1)]

Top right: Exposed wiring

Bottom: Spill still not abated