



Materials Recovery Facility Safety
Observation Form

Date: 6/28/2016

Name of Observer: Ron Kovaleski

Issues

Picture: See Below



Too much trash in eaves of Transfer Building causing panels to push out.



Ceiling tiles need to be replaced.



Materials Recovery Facility Safety
Observation Form



Electric motor bolted and strapped to conveyor. there was also a motor on the 1st floor south side that was strapped in a similar fashion. Note that motor mounts need to be inspected to verify that they properly bolted and mounted as designed.



Exit landing and door blocked.



Blocked walkway



Materials Recovery Facility Safety
Observation Form



Oil spill in storage closet.



Loose guarding on conveyor.



Materials Recovery Facility Safety
Observation Form



Hand rail needs repair in two spots



Emergency exit blocked by danger tape and cone.



Button switch missing on control panel.



Materials Recovery Facility Safety Observation Form



Left: review lock-out procedures and ensure they are up to date.

Right: debris & dust atop electric motor



Left: Missing fire extinguisher

Right: Sharps container with no lid



Materials Recovery Facility Safety Observation Form

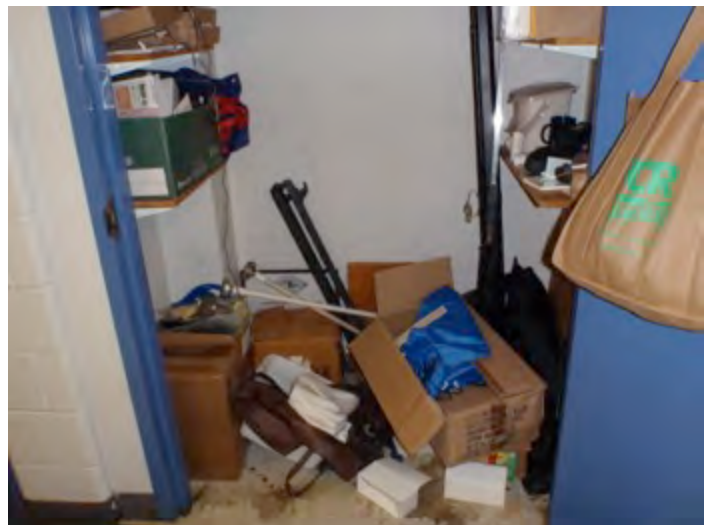


Top left: blocked electrical panel

Top right: container of bleach left in hallway

Center: not a storage area.

Bottom (both): Closet needs to be cleaned





Materials Recovery Facility Safety Observation Form



Top left: Door latch missing



Top right: Electrical panel blocked

Bottom left: Machine guard missing

Bottom right: E-Stop line not secured as
designed to 3rd floor sorting conveyor





Materials Recovery Facility Safety Observation Form



Left: Broken window

Bottom (both): broken latches on machine guards

